

PART OF THE NW.1/4, OF SECTION 22, T.6N., R.3W., S.L.B. & M.

141

JORDAN HOLLOW

IN WEBER COUNTY

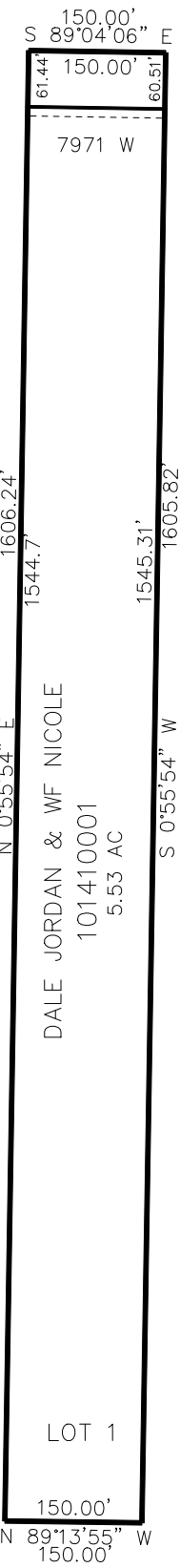
TAXING UNIT: 303

SCALE 1" = 200'

SEE PAGE 43

SEE PAGE 43

SEE PAGE 43



10' UTILITY & DRAINAGE EASEMENTS EACH  
SIDE OF PROPERTY LINES AS INDICATED  
BY DASHED LINES EXCEPT AS OTHERWISE  
SHOWN.

SEE PAGE 43

FOR COMPLETE ENG DATA SEE  
ORIGINAL DEDICATION PLAT IN  
BOOK 75, PAGE 002 OF RECORDS.